

**Phyllis Avenue
Motspur Park, KT3 6JZ**

£730,000 Freehold



This competitively priced FOUR BEDROOM, TWO BATHROOM fully extended 1930's terrace house is perfectly located for Motspur Park station and high street. There is a spacious open plan ground floor with wood floors, a modern fitted kitchen and bifolding doors onto a landscaped rear garden and brick built storage shed. On the first floor there are two double bedrooms, one single bedroom and a family bathroom. The loft has been converted creating a spacious master bedroom with storage and en suite bathroom. Offered to the market with no onward chain.

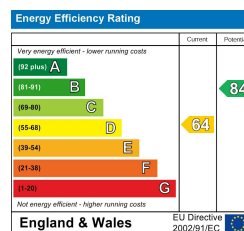
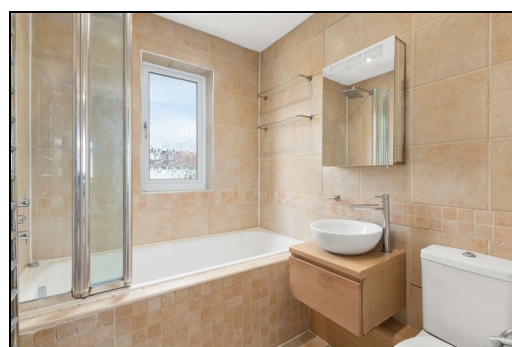
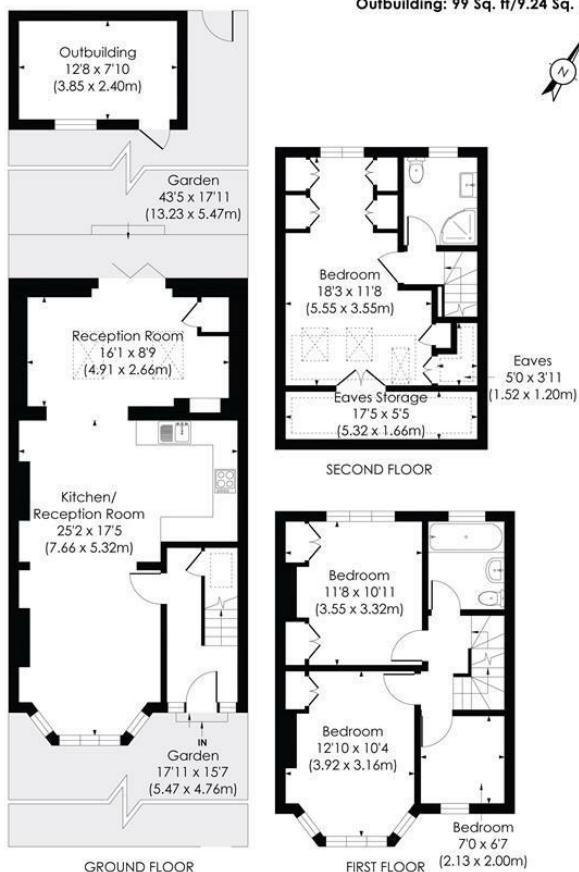
PHYLLIS AVENUE, KT3

Approx. Gross Internal Floor Area

1350 Sq. ft/125.38 Sq. m (Incl. RHH, Excl. Outbuilding)

1196 Sq. ft/111.08 Sq. m (Excl. RHH, Excl. Outbuilding)

Outbuilding: 99 Sq. ft/9.24 Sq. m



- Four Bedroom - Two Bathroom
- Fully Extended 1930's Mid Terrace House
- No Onward Chain
- Spacious Open Plan Ground Floor With Bifolding Doors
- Close To Motspur Park Station And Shops
- Modern Kitchen And Bathrooms
- Spacious Master Bedroom With Storage And En Suite
- Landscaped Rear Garden With Brick Built Storage
- EPC - D
- Council Tax Band - E

For Free Mortgage Quote and Best Mortgage Rates, call Ellisons Mortgage Advisor on 0208 944 9595



Although these particulars are believed to be correct, their accuracy is not guaranteed and they do not form part of any contract.

Celebrating 30 years of successful Sales and Lettings in Merton

